

# Mitral Valve Analysis

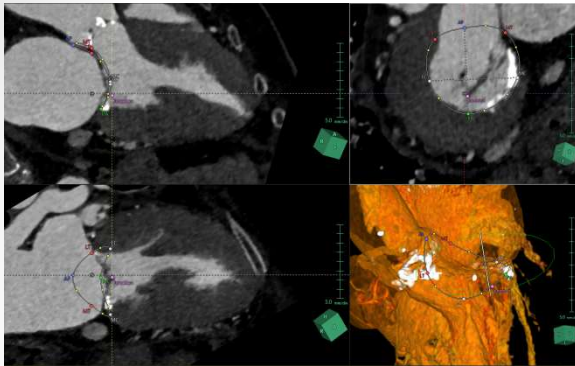
Synapse 3D Mitral Valve Analysis measures the mitral valve annulus, measures distance, perimeter and area, measures the calcification area in the mitral valve and place the virtual artificial valve.

Recommended image type ▶ CT with contrast (ECG-gated single or multiphase)

Analysis target ▶ Heart

## Analysis

### Annulus measurement



Annulus measurement			
Name	2D	3D	
IC distance	35.6mm	35.6mm	
SL distance	34.7mm	37.8mm	
TT distance	28.6mm	28.6mm	
AP-Junction distance	27.5mm	34.6mm	
PA-Junction distance	7.2mm	9.4mm	
Perimeter	115.8mm	128.0mm	
Projected area	1085.3mm <sup>2</sup>	----	

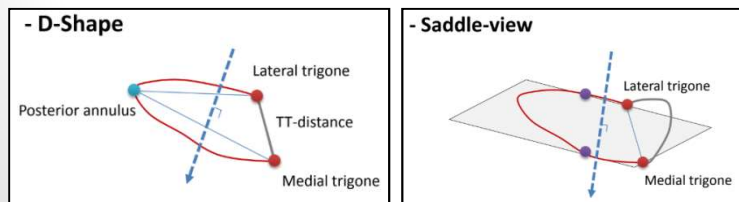
Mitral valve analysis report					
Report name	Study date	Study time	Study phase	Study type	Study status
1411111111111111	2015/01/01	10:00	ECG-gated	3D	Completed
Report date	2015/01/01	10:00	ECG-gated	3D	Completed
Report time	2015/01/01	10:00	ECG-gated	3D	Completed
Report phase	ECG-gated	3D	ECG-gated	3D	Completed
Report status	Completed	Completed	Completed	Completed	Completed

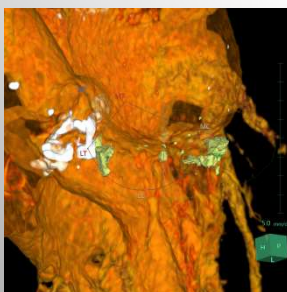
Measurement parameters	
IC distance	35.6mm
SL distance	34.7mm
TT distance	28.6mm
AP-Junction distance	27.5mm
PA-Junction distance	7.2mm
Perimeter	115.8mm
Projected area	1085.3mm <sup>2</sup>

Automatically creates measurements which are exported to the report.

### View types



### Valve calcification



Plaque measurement (R-R 75.0 %)		
Threshold	Volume [mm <sup>3</sup> ]	%
-50 ~ -1	19.64	0
0 ~ 29	28.98	0
30 ~ 69	82.95	1
70 ~ 129	375.69	4
130 ~ 584	8292.94	89
585 ~	491.04	5

### Virtual valve

